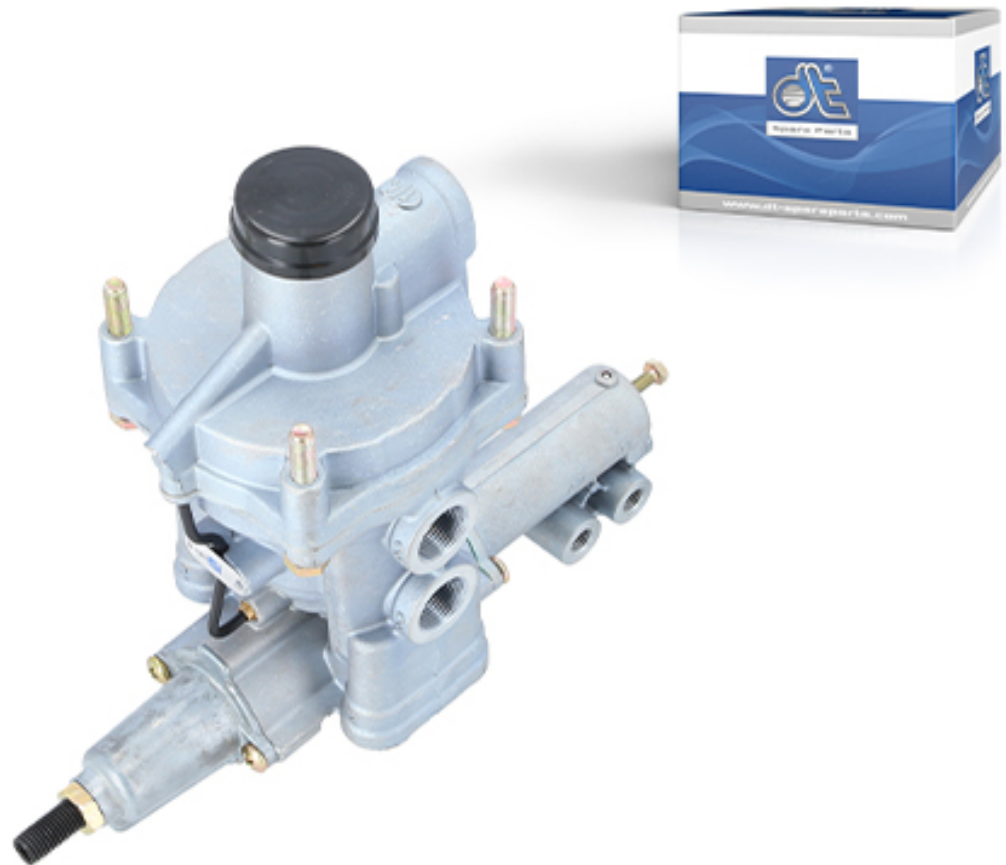


Load sensitive valve

Suitable for: DAF, Fruehauf, Kögel, MAN, Renault, Scania

???????

475 715 500 0



The automatic load-dependent brake force regulator has the task of making the braking effect of a truck dependent on the load condition of the vehicle. With a heavy load, the brakes are applied more and with less load, the braking effect is reduced. This decreases unnecessary wear and prevents the wheels from locking.

This valve is specially designed for trailers with air suspension systems on several axles. The braking force is adjusted via the control pressure of the air suspension bellows.

Hints & tips: Observe the installation instructions and setting data of the vehicle or trailer manufacturer.
The Parts Specialists show you all the tips and tricks for replacing trailer parts on YouTube: <https://www.youtube-nocookie.com/embed/FBBdLzVrQ3c>

Request article or order in Partner Portal

DT Spare Parts The brand DT Spare Parts from Germany provides a complete range of vehicle parts and accessories with a 24 month guarantee – no matter whether for trucks, trailers, buses, transporters or further applications, e.g. cars, agricultural vehicles, construction vehicles, marine or industrial applications. The guaranteed brand quality is achieved through the consistent product optimisation and relentless quality assurance within the framework of the Diesel Technic Quality System (DTQS). More info: [www.dtqs.de](t3://page?uid=524)