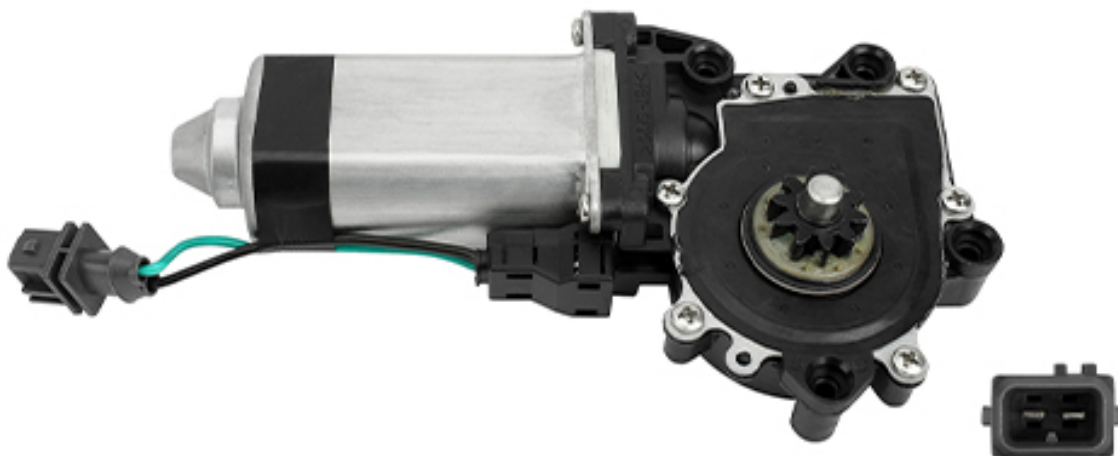


Window motor, left

Suitable for: Mercedes-Benz



005 820 9042



The window motor is an electric motor that is operated via a button in the control panel in the cabin; it is used to raise or lower the window panes independently of each other, or to stop them in any position.

So-called "convenience features" can be set up via a control unit. These include automatic raising and lowering of the window when the button is pressed briefly, connecting the window regulator function with the central locking system, or an important safety function – anti-pinch protection. Without this function, parts of the body (risk of injury) or objects could otherwise be pinched by the window. A sensor detects resistance when the window is closing and the pane is stopped.

`<div class="video-embed"> <iframe width="480" height="270" src="https://www.youtube-nocookie.com/embed/hvaFfMBwF-g" frameborder="0" allow="autoplay; encrypted-media" allowfullscreen></iframe> </div> <p>Hints & tips</p> <p>Based on our many years of experience with common assembly errors in this product group, which can lead to a rejection in the case of warranty, we recommend that you check in advance whether:</p> All components are installed free of tension and in the correct installation positionAll fastening elements are secured against loosening (e.g. by screw locking, lock washers, lock nuts etc.)</code>`

or window frames of the pane are not bentThe pane slides easily inside the tracksUpper and lower pane stops are set correctlyControl (e.g. actuation switches, cabling etc.) and the adjacent components function properlyElectronic window regulator motors may need to be trained (consult appropriate service literature

Request article or order in Partner Portal

<p>DT Spare Parts</p> <p>The brand DT Spare Parts from Germany provides a complete range of vehicle parts and accessories with a 24 month guarantee – no matter whether for trucks, trailers, buses, transporters or further applications, e.g. cars, agricultural vehicles, construction vehicles, marine or industrial applications. The guaranteed brand quality is achieved through the consistent product optimisation and relentless quality assurance within the framework of the Diesel Technic Quality System (DTQS).</p> <p>More info: www.dtqs.de</p>